



Hoffman

HUMAN-MACHINE INTERFACE



ENCLOSURE AND ERGONOMIC SOLUTIONS FOR VIRTUALLY ANY APPLICATION

Hoffman offers a large selection of human machine interface (HMI) enclosure solutions and accessories. Attractive, functional and easy to use our solutions are designed to accept most major manufacturers' operator interface devices and critical control components.



HUMAN-MACHINE INTERFACE

CHAPTER CONTENTS

SYPEND MONITOR AND KEYBOARD ARM	4
CONCEPT HMI SYSTEMS AND ACCESSORIES	6
CONCEPT HMI OVERVIEW	6
CONCEPT HMI TYPE 4	8
ACCESSORIES.....	9
CC4000 HMI SYSTEMS AND ACCESSORIES	12
CC4000 OVERVIEW	12
CC4000 TYPE 12	14
ACCESSORIES.....	16
COMPACT PENDANT ARM, SERIES 2 TYPE 12.....	20
COMPACT PENDANT ARM, SERIES 2 TYPE 12	20
ACCESSORIES.....	22
COMPACT PENDANT ARM SERIES 2 CONFIGURATIONS.....	29

SYSPEND MONITOR AND KEYBOARD ARM



APPLICATION

Vertical motion pendant arm for mounting a flat screen monitor, keyboard and mouse in industrial environments. Opens up plant floor space by locating the display where it is convenient for the operator. Display and keyboard can be raised and lowered with one hand. Keyboard folds up when not in use.

SCOPE OF DELIVERY

- Vertical motion pendant arm
- Assembly kit
- Installation instruction
- Monitor, keyboard and mouse are not included
- VELCRO® included to affix keyboard to mounting surface
VELCRO is a trademark of Velcro Industries B.V.

FEATURES

- Supports 2,7-6,8 kg loads with an internal gas spring counterbalance
- Provides 304-mm of vertical height adjustment
- Toggle lever locks arm in place when repositioned vertically
- 76 x 76 mm and 102 x 102 mm VESA mounting pattern fits most flat screen monitors
- Arm swivels 340 degrees at monitor end and 180 degrees at mounting end
- Display tilts forward 15 degrees and back 45 degrees to reduce glare
- Folds up within 127 mm of the wall
- Display and keyboard stay level as they travel vertically
- Side cable manager protects cables and cords from pulling or chafing
- Easily installs on a wall or vertical surface

SPECIFICATIONS

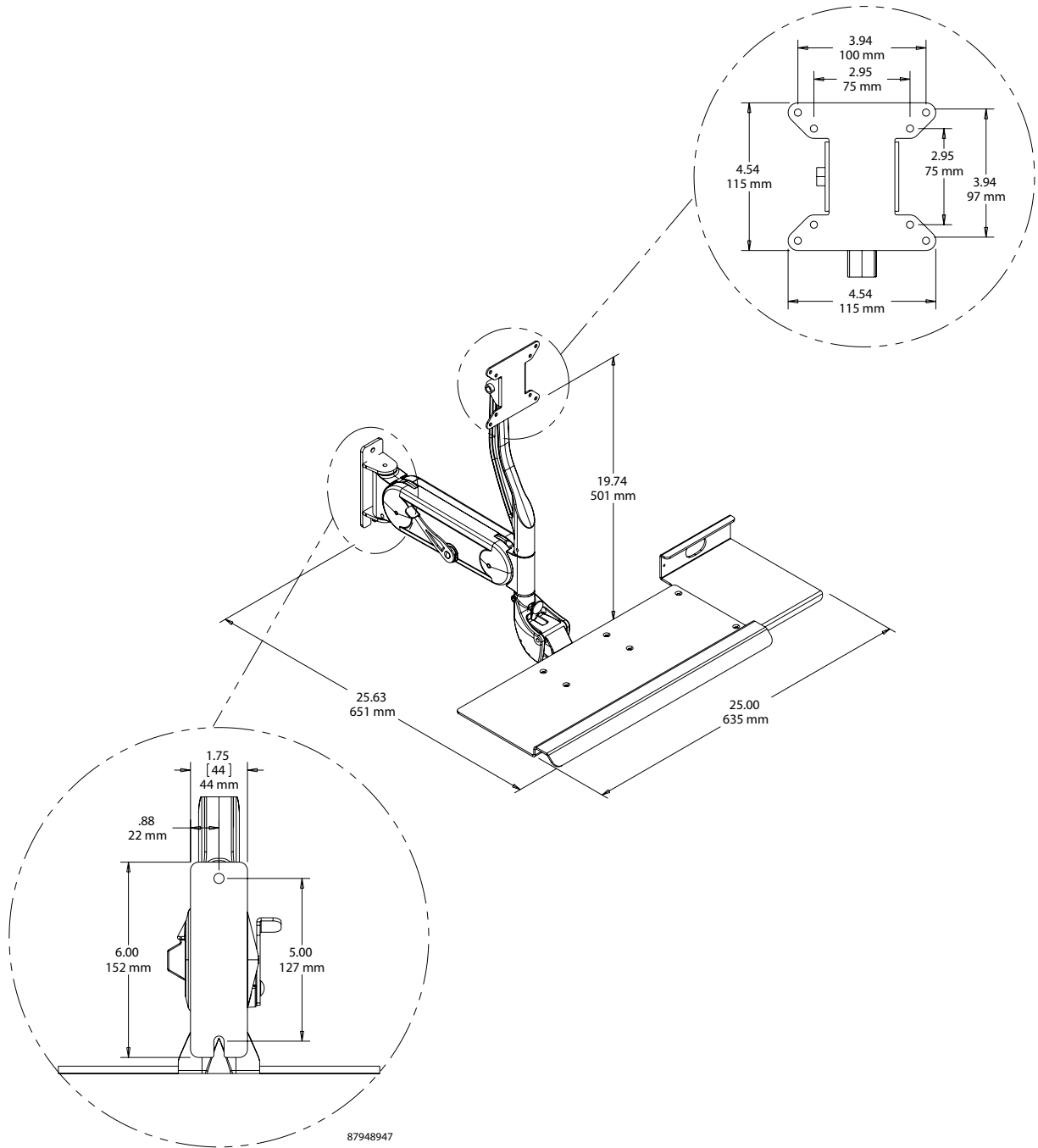
- Aluminum construction
- Gas spring counterbalance

FINISH

- RAL 7035 light-gray finish

STANDARD PRODUCT

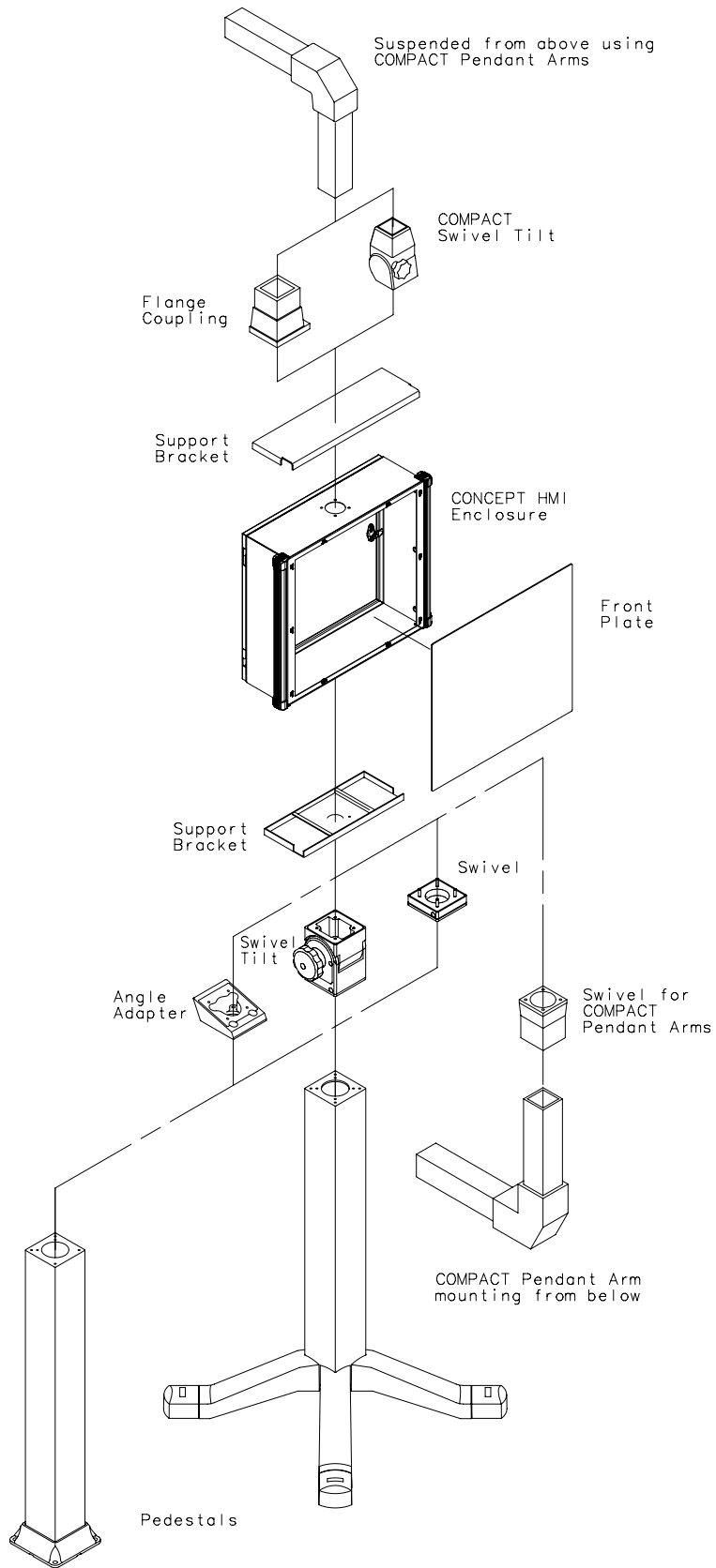
Item number	AxBxC in./mm	Description	Arm Weight kg
VAMONITOR	21.22 x 25.00 x 25.63 539 x 635 x 651	SYSPEND Monitor and Keyboard Arm	9.07



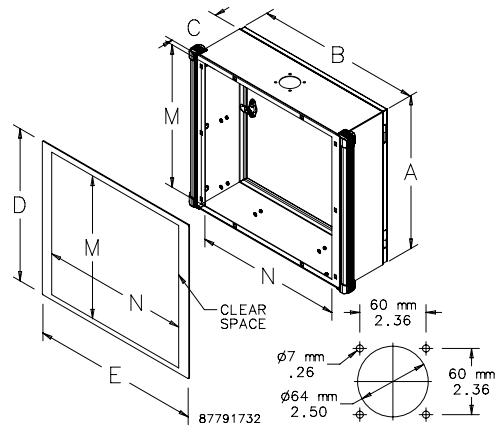
CONCEPT HMI OVERVIEW



These human-machine interface (HMI) enclosures are appropriate for applications incorporating flat-screen devices, pushbuttons and other similar devices. Available in three depths, the system's capability for pendant or pedestal mounting offers exceptional design flexibility.



CONCEPT HMI, TYPE 4 (IP66)



INDUSTRY STANDARDS

UL 508A Listed; Type 4, 12; File Number E61997
 cUL Listed per CSA C22.2 No. 94; Type 4, 12; File No. E61997

NEMA Type 4, 12
 IEC 60529, IP66



APPLICATION

A traditional landscape-oriented HMI enclosure made of light-gray steel, the CONCEPT HMI is unique among HMI enclosure systems when you need a range of customization options. This pendant- or pedestal-mounted system has many possible configurations and modifications, including a removable front plate that makes it easy to install HMI components and the ability to accommodate cutouts anywhere on the enclosure.

SCOPE OF DELIVERY

- Enclosure with hinged rear cover and two handles integrated
- Assembly kit
- Installation instruction

FEATURES

- Pre-drilled hole in top for pendant arm mounting
- Pedestal mounting when enclosure is inverted
- Integral handle extrusions have a comfort grip that extends the length of the profile; standard color black
- Hinged rear corner-formed door has a single-point latch, seamless foam-in-place gasket and panel studs
- Aluminum front plate

SPECIFICATIONS

- Body manufactured from 1,6 mm thick steel
- Front plate is 3 mm thick aluminum
- Grounding stud on body; bonding provision on door
- Simple easy-to-remove and install hinge pins with built-in captive clip
- High-torque threadless studs and fasteners on door

FINISH

Enclosure body and front plate have RAL 7035 light-gray polyester powder paint finish. Standard handle extrusions and end caps have RAL 9005 black polyester powder paint finish.

STANDARD PRODUCT CONCEPT HMI ENCLOSURES WITH BLACK EXTRUSIONS

Item number	AxBxC mm	AxBxC in.	Front Opening M mm	Front Opening M in.	Front Opening N mm	Front Opening N in.	Front Plate D mm	Front Plate D in.	Front Plate E mm	Front Plate E in.	Product Weight kg
CP253512	250 x 350 x 120	9.84 x 13.78 x 4.72	210	8.27	280	11.02	250	9.86	361	14.22	4.8
CP304012	300 x 400 x 120	11.81 x 15.75 x 4.72	260	10.24	330	12.99	330	12.99	411	16.19	6.8
CP323512	325 x 350 x 120	12.80 x 13.78 x 4.72	285	11.22	280	11.02	325	12.81	361	14.22	7.5
CP354512	350 x 450 x 120	13.78 x 17.72 x 4.72	310	12.20	380	14.96	350	13.79	461	18.16	9.1
CP354518	350 x 450 x 180	13.78 x 17.72 x 7.09	310	12.20	380	14.96	350	13.79	461	18.16	10.1
CP354530	350 x 450 x 300	13.78 x 17.72 x 11.80	310	12.20	380	14.96	350	13.79	461	18.16	12.2
CP374012	375 x 400 x 120	14.76 x 15.75 x 4.72	335	13.19	330	12.99	375	14.78	411	16.19	9.1
CP405012	400 x 500 x 120	15.75 x 19.69 x 4.72	360	14.17	430	16.93	400	15.76	511	20.13	11.0
CP405018	400 x 500 x 180	15.75 x 19.69 x 7.09	360	14.17	430	16.93	400	15.76	511	20.13	12.0
CP405030	400 x 500 x 300	15.75 x 19.69 x 11.80	360	14.17	430	16.93	400	15.76	511	20.13	14.0
CP424512	425 x 450 x 120	16.73 x 17.72 x 4.72	385	15.16	380	14.96	425	16.75	461	18.16	10.8
CP424518	425 x 450 x 180	16.73 x 17.72 x 7.09	385	15.16	380	14.96	425	16.75	461	18.16	11.7
CP424530	425 x 450 x 300	16.73 x 17.72 x 11.80	385	15.16	380	14.96	425	16.75	461	18.16	13.7
CP455512	450 x 550 x 120	17.72 x 21.65 x 4.72	410	16.14	480	18.90	450	17.73	561	22.10	13.0
CP455518	450 x 550 x 180	17.72 x 21.65 x 7.09	410	16.14	480	18.90	450	17.73	561	22.10	14.0
CP455530	450 x 550 x 300	17.72 x 21.65 x 11.80	410	16.14	480	18.90	450	17.73	561	22.10	16.2
CP475012	475 x 500 x 120	18.70 x 19.69 x 4.72	435	17.13	430	16.93	475	18.72	511	20.13	12.7
CP475018	475 x 500 x 180	18.70 x 19.69 x 7.09	435	17.13	430	16.93	475	18.72	511	20.13	13.7
CP475030	475 x 500 x 300	18.70 x 19.69 x 11.80	435	17.13	430	16.93	475	18.72	511	20.13	15.7
CP486012	480 x 600 x 120	18.90 x 23.62 x 4.72	440	17.32	530	20.87	480	18.90	611	24.06	14.6
CP486018	480 x 600 x 180	18.90 x 23.62 x 7.09	440	17.32	530	20.87	480	18.90	611	24.06	15.7
CP486030	480 x 600 x 300	18.90 x 23.62 x 11.80	440	17.32	530	20.87	480	18.90	611	24.06	17.9
CP525512	525 x 550 x 120	20.67 x 21.65 x 4.72	485	19.09	480	18.90	525	20.68	561	22.10	14.7
CP525518	525 x 550 x 180	20.67 x 21.65 x 7.09	485	19.09	480	18.90	525	20.68	561	22.10	15.8
CP525530	525 x 550 x 300	20.67 x 21.65 x 11.80	485	19.09	480	18.90	525	20.68	561	22.10	18.0
CP556012	555 x 600 x 120	21.85 x 23.62 x 4.72	515	20.28	530	20.87	555	21.86	611	24.06	16.7
CP556018	555 x 600 x 180	21.85 x 23.62 x 7.09	515	20.28	530	20.87	555	21.86	611	24.06	17.6
CP556030	555 x 600 x 300	21.85 x 23.62 x 11.80	515	20.28	530	20.87	555	21.86	611	24.06	19.8

For product specific accessories, please go to the end of each subsection.
 For other general accessories, please refer to the chapter "Accessories".

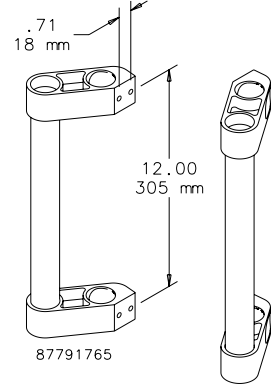
ACCESSORIES

ACCESSORY HANDLE KIT



Install handles on the integral handle extrusions or the bottom of the enclosure. Handle is 340.4 mm long and can be cut down to fit smaller enclosure sizes. Aluminum tube has RAL 9005 black polyester powder paint finish. Plastic ends are RAL 9005 black. Kit includes one pair of handles and all mounting hardware.

Item number	Description	Product Weight kg
CHDLK	One pair of handles and mounting hardware	.77

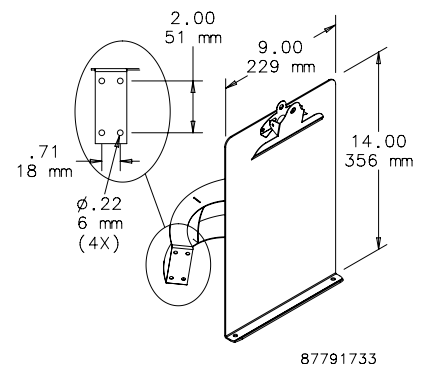


CLIPBOARD/WHITE BOARD



The Clipboard/White Board can be installed on either handle extrusion. All mounting hardware and installation instructions are included. Finished with white paint. Dry-erase markers can be used on the front writing surface.

Item number	Description	Product Weight kg
CCLPBRD	Clipboard and mounting hardware	.9

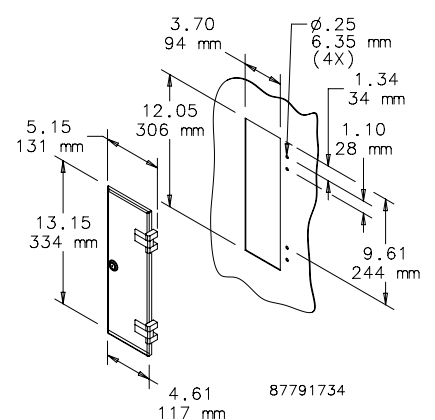


DRIVE ACCESS DOOR

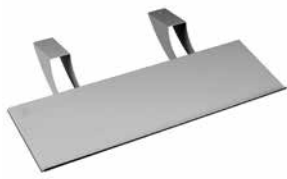


Drive door can be installed only on enclosures to access internal disk drives. Key-locking latch is included. An installation template is included in the installation instructions. All installation hardware is included. RAL 7035 light-gray polyester powder paint finish. Hinges have RAL 9005 black polyester powder paint finish. Maintains NEMA Type 12 rating. Cannot be used on 120 mm deep enclosures.

Item number	Description	Product Weight kg
COACCDR	Door and installation hardware	.77

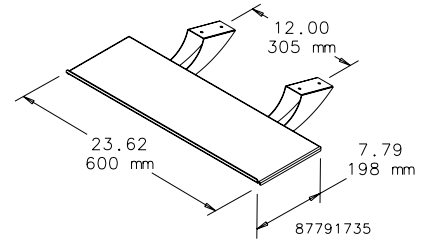


KEYBOARD TRAY

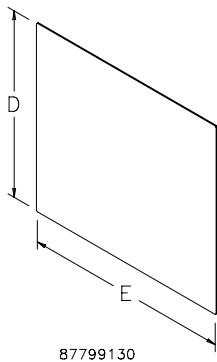


The Keyboard Tray mounts under the enclosure for a keyboard and mouse. All mounting hardware is included. The tray has RAL 7035 light-gray polyester powder paint finish.

Item number	Description	Product Weight kg
CKBT	Keyboard tray and mounting hardware	1.45



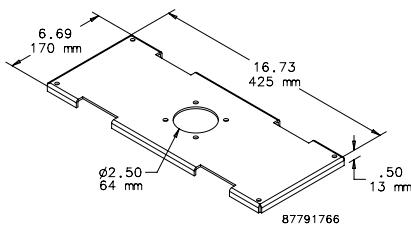
REPLACEMENT FRONT PLATE



Aluminum plate is 3,2 mm thick. Finish is RAL 7035 light-gray polyester powder paint. Mounting hardware is included.

Item number	D mm/in.	E mm/in.	Fits Enclosure A x B mm/in.	Product Weight kg
CPFP2535	250 9.84	361 14.22	250 x 350 9.84 x 13.78	.77
CPFP3040	300 11.81	411 16.19	300 x 400 11.81 x 15.75	1.09
CPFP3235	325 12.80	361 14.22	325 x 350 12.80 x 13.78	1.04
CPFP3545	350 13.78	461 18.16	350 x 450 13.78 x 17.72	1.41
CPFP3740	375 14.76	411 16.19	375 x 400 14.76 x 15.75	1.36
CPFP4050	400 15.75	511 20.13	400 x 500 15.75 x 19.68	1.77
CPFP4245	425 16.73	461 18.16	425 x 450 16.73 x 17.72	1.72
CPFP4555	450 17.72	561 22.10	450 x 550 17.72 x 21.65	2.18
CPFP4750	475 18.70	511 20.13	475 x 500 18.70 x 19.68	2.13
CPFP4860	480 18.90	611 24.06	480 x 600 18.90 x 23.62	2.54
CPFP5255	525 20.67	561 22.10	525 x 550 20.67 x 21.65	2.54
CPFP5560	555 21.85	611 24.06	555 x 600 21.85 x 23.62	2.95

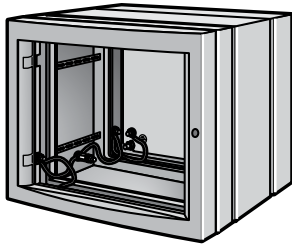
SUPPORT BRACKET



Support Bracket provides extra rigidity in 180 mm-deep enclosures that are either pendant- or pedestal-mounted. The bracket mounts in the top or bottom of the enclosure; drilling is required (drill points included on enclosure). The support bracket is not required for 120 mm-deep enclosures.

Item number	Description	Product Weight kg
CSB180	One bracket per package	.82

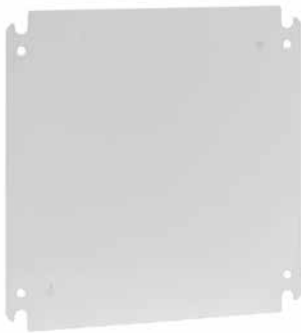
GROUNDING KIT



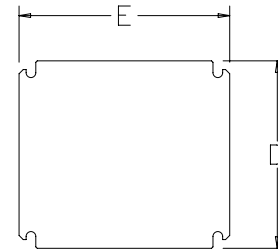
Kit provides a means of attaching a grounding conductor to an enclosure. Kit consists of two insulated copper wires with all installation hardware and instructions included.

Item number
CCGK

DOOR PANELS



Use CONCEPT HMI Door Panels for mounting in the rear door of a CONCEPT HMI enclosure. Constructed of 1,6 mm thick steel and painted white; conductive panels have a galvanized finish.

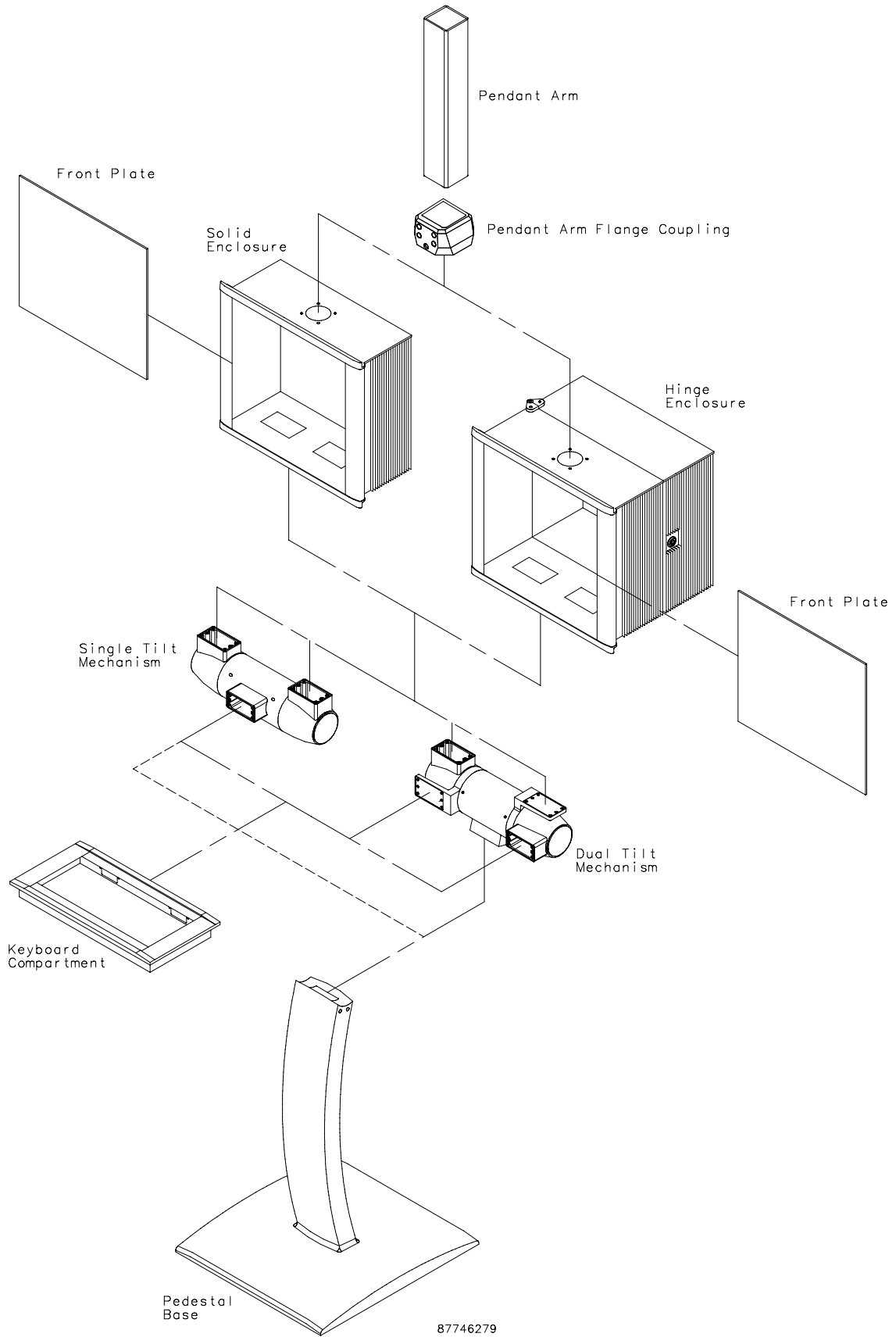


87923202

Item number	Type	Thickness mm	D mm	D in.	E mm	E in.
CP2535	Steel	1.63	131	5.18	232	9.14
CP2535G	Conductive	2.05	131	5.18	232	9.14
CP3040	Steel	1.63	181	7.15	282	11.11
CP3040G	Conductive	2.05	181	7.15	282	11.11
CP3235	Steel	1.63	206	8.13	232	9.14
CP3235G	Conductive	2.05	206	8.13	232	9.14
CP3545	Steel	1.63	232	9.12	332	13.08
CP3545G	Conductive	2.05	232	9.12	332	13.08
CP3740	Steel	1.63	256	10.10	282	11.11
CP3740G	Conductive	2.05	256	10.10	282	11.11
CP4050	Steel	2.05	281	11.09	382	15.04
CP4050G	Conductive	2.05	281	11.09	382	15.04
CP4245	Steel	2.05	306	12.07	332	13.08
CP4245G	Conductive	2.05	306	12.07	332	13.08
CP4555	Steel	2.05	331	13.05	432	17.01
CP4555G	Conductive	2.05	331	13.05	432	17.01
CP4750	Steel	2.05	356	14.04	382	15.04
CP4750G	Conductive	2.05	356	14.04	382	15.04
CP4860	Steel	2.05	361	14.23	482	18.98
CP4860G	Conductive	2.05	361	14.23	482	18.98
CP5255	Steel	2.05	407	16.01	432	17.01
CP5255G	Conductive	2.05	407	16.01	432	17.01
CP5560	Steel	2.05	436	17.19	482	18.98
CP5560G	Conductive	2.05	436	17.19	482	18.98

CC4000 HMI OVERVIEW

This attractive family of human-machine interface (HMI) enclosures sets a new standard for visual appeal coupled with design flexibility and ease of use. It's available in two body styles, three configurations and eight sizes. The system's capability for pendant or pedestal mounting, with or without a keyboard provision, offers exceptional design flexibility. Extruded aluminum top and sides provide a quality look while offering superior heat dissipation. Hinged body models provide extra depth and allow rear access. The single- and dual-tilt mechanisms give the operator control over adjustment and ergonomic positioning of the enclosure and/or keyboard, depending on configuration. The tilt mechanisms are the only additional components required for mounting the enclosure on a pedestal and for adding a keyboard compartment with either pedestal or pendant mounting.



CC4000, TYPE 12 (IP55)



INDUSTRY STANDARDS

UL 508A Listed; Type 12; File No. E61997
 cUL Listed per CSA C22.2 No. 94; Type 12; File No. E61997

NEMA/EEMAC Type 12
 IEC 60529, IP55
 DIN 40050



APPLICATION

Choose from various body styles, configurations and mounting options. The keyboard and/or enclosure tilts to be ergonomic and comfortable.

SCOPE OF DELIVERY

- Enclosure is available hinged or solid
- Assembly kit
- Installation instruction

FEATURES

CC4000 Enclosures

All body sizes and styles are available for pendant or pedestal mounting with or without a keyboard. Hinged and solid bodies are available in the sizes shown in the table. Hinged bodies offer extra depth and rear access. Rear aluminum screw cover is standard.

Pendant-Mount Enclosures

Use in pendant-mounting applications where keyboard compartment is not required.
 Cutout in top for mounting with pendant arm.

Pendant-Mount Enclosures with Keyboard Compartment Capability

Use in pendant-mounting applications where a keyboard compartment is required.

- Cutout in top for mounting with pendant arm
- Cutout on bottom for keyboard tilt mechanism
- Order tilt mechanism and keyboard compartment separately

Pedestal-Mount Enclosure

Use in pedestal mounting applications with the CPCC4 Pedestal, either with or without a keyboard.

- Tilt mechanism required for connecting enclosure and pedestal
- Cutout on bottom for tilt mechanism mounting
- Order tilt mechanism and keyboard compartment (if needed) separately

SPECIFICATIONS

- Extruded Type 6063 aluminum top and sides provide a quality appearance and internal flexibility
- Body is available hinged or solid
- Optional rear covers can be hinged on either the right or left side
- Integral mounting system has extruded screw channels to facilitate easy component installation
- Each size is designed to accommodate a range of flat-screen HMI devices
- Oil-resistant gasket attached with oil-resistant adhesive
- High thermal conductivity for superior heat dissipation

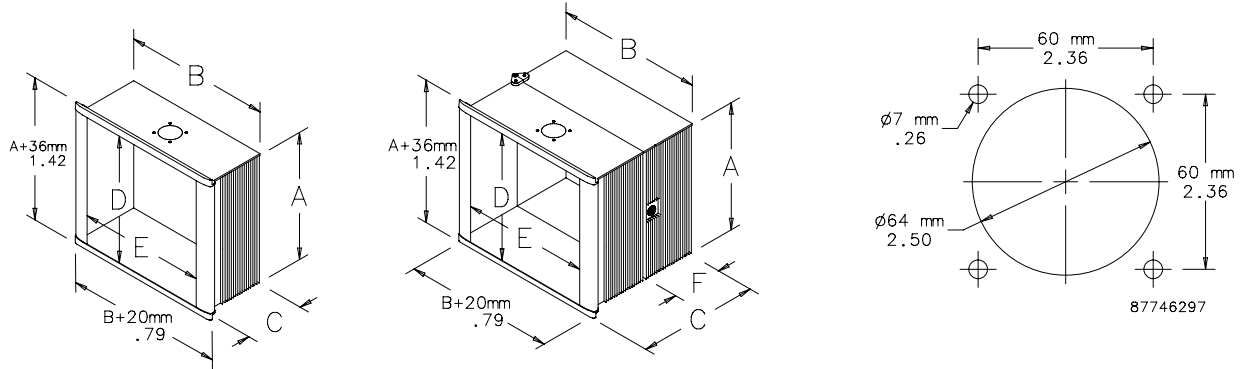
FINISH

Enclosure vertical components are clear anodized aluminum; horizontal components are painted RAL 7021 black aluminum. Steel front plates have RAL 7035 gray polyester powder paint finish. Stainless steel front plates have a brushed finish. Aluminum rear covers have a clear anodized brushed finish.

*For product specific accessories, please go to the end of each subsection.
 For other general accessories, please refer to the chapter "Accessories".*

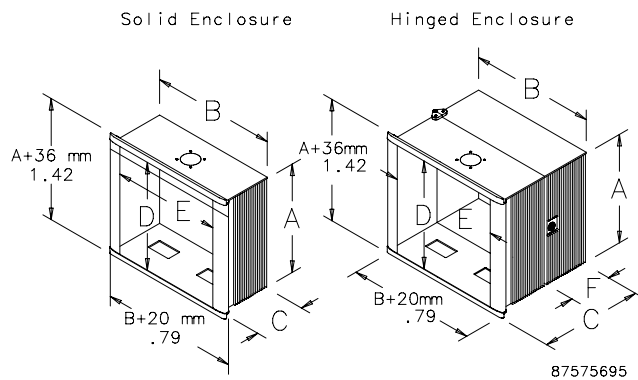
STANDARD PRODUCT PENDANT MOUNT ENCLOSURE

Item number	AxBxC mm	AxBxC in.	Body Style	Usable Area D x E mm	Usable Area D x E in.	F mm	F in.	Product Weight kg
CCC284014PN	280 x 400 x 140	11.02 x 15.75 x 5.51	Solid	185 x 275	7.28 x 10.83	—	—	7.44
CCC334014PN	330 x 400 x 140	12.99 x 15.75 x 5.51	Solid	235 x 275	9.25 x 10.83	—	—	7.94
CCC456029PN	450 x 600 x 290	17.72 x 23.62 x 11.42	Solid	355 x 475	13.98 x 18.70	—	—	19.96
CCC334026HPN	330 x 400 x 268	12.99 x 15.75 x 10.55	Hinged	235 x 275	9.25 x 10.83	128	5.04	13.60
CCC425326HPN	425 x 530 x 268	16.73 x 20.87 x 10.55	Hinged	330 x 405	12.99 x 15.94	128	5.04	18.60



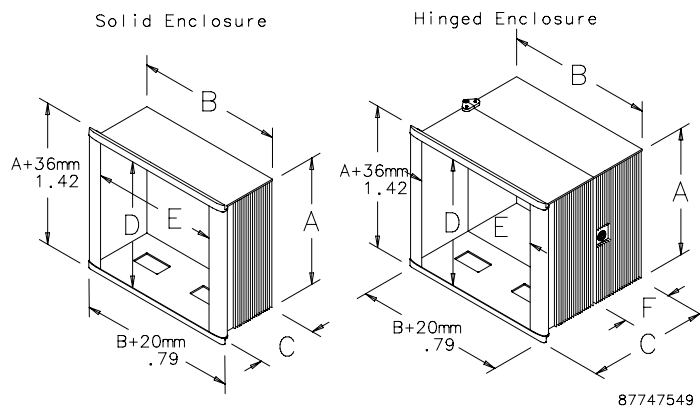
STANDARD PRODUCT PENDANT MOUNT ENCLOSURES WITH KEYBOARD COMPARTMENT CAPABILITY

Item number	AxBxC mm	AxBxC in.	Body Style	Usable Area D x E mm	Usable Area D x E in.	F mm	F in.	Tilt Mechanism	Product Weight kg
CCC284014PNK	280 x 400 x 140	11.02 x 15.75 x 5.51	Solid	185 x 275	7.28 x 10.83	—	—	CTKBC	7.44
CCC456029PNK	450 x 600 x 290	17.72 x 23.62 x 11.42	Solid	355 x 475	13.98 x 18.70	—	—	CTKBC	19.96
CCC334026HPNK	330 x 400 x 268	12.99 x 15.75 x 10.55	Hinged	235 x 275	9.25 x 10.83	128	5.04	CTKBC	13.61
CCC425326HPNK	425 x 530 x 268	16.73 x 20.87 x 10.55	Hinged	330 x 405	12.99 x 15.94	128	5.04	CTKBC	18.60



STANDARD PRODUCT PEDESTAL MOUNT ENCLOSURES

Item number	AxBxC mm	AxBxC in.	Body Style	D x E mm	D x E in.	F mm	F in.	Tilt Mechanism Without Keyboard	Tilt Mechanism With Keyboard	Weight kg
CCC284014PD	280 x 400 x 140	11.02 x 15.75 x 5.51	Solid	185 x 275	7.28 x 10.83	—	—	CTKBC	CTKBPC	7.44
CCC334014PD	330 x 400 x 140	12.99 x 15.75 x 5.51	Solid	235 x 275	9.25 x 10.83	—	—	CTKBC	CTKBPC	7.94
CCC456029PD	450 x 600 x 290	17.72 x 23.62 x 11.41	Solid	355 x 475	13.98 x 18.70	—	—	CTKBC	CTKBPC	19.96
CCC334026HPD	330 x 400 x 268	12.99 x 15.75 x 10.55	Hinged	235 x 275	9.25 x 10.83	128	5.04	CTKBC	CTKBPC	13.61
CCC425326HPD	425 x 530 x 268	16.73 x 20.87 x 10.55	Hinged	330 x 405	12.99 x 15.94	128	5.04	CTKBC	CTKBPC	18.60



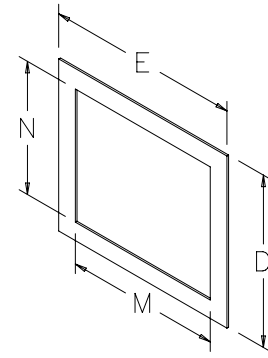
ACCESSORIES

FRONT PLATE



Front Plates are 1,6 mm thick steel with RAL 7035 light-gray polyester powder paint finish. Stainless steel front plates have a brushed finish.

Hoffman can provide pre-configured front plates to meet your specific requirements.



87746301

STANDARD PRODUCT CC4000 FRONT PLATE

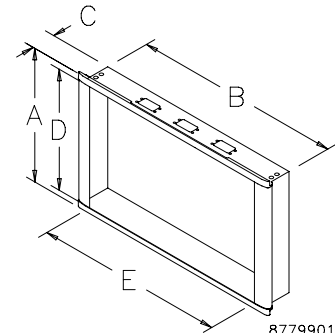
Item number	Steel Type	Panel Size D x E mm	Panel Size D x E in.	Usable Area N x M mm	Usable Area N x M in.	Fits Enclosure mm	Fits Enclosure in.	Product Weight kg
C4FP2840	Steel	219 x 309	8.62 x 12.17	185 x 275	7.28 x 10.83	280 x 400 x 140/200	11.02 x 15.75 x 5.51/7.87	1.59
C4FP2840SS	Stainless Steel	219 x 309	8.62 x 12.17	185 x 275	7.28 x 10.83	280 x 400 x 140/200	11.02 x 15.75 x 5.51/7.87	1.81
C4FP3340	Steel	269 x 309	10.59 x 12.17	235 x 275	9.25 x 10.83	330 x 400 x 140/200/268	12.99 x 15.75 x 5.51/7.87/10.55	1.81
C4FP4253	Steel	364 x 439	14.33 x 17.28	330 x 405	12.99 x 15.94	425 x 530 x 200	16.73 x 20.87 x 7.87	3.95
C4FP4253SS	Stainless Steel	364 x 439	14.33 x 17.28	330 x 405	12.99 x 15.94	425 x 530 x 200	16.73 x 20.87 x 7.87	3.40
C4FP4560	Steel	389 x 509	15.31 x 20.04	355 x 475	13.98 x 18.70	450 x 600 x 290	17.72 x 23.62 x 11.42	3.63
C4FP4560SS	Stainless Steel	389 x 509	15.31 x 20.04	355 x 475	13.98 x 18.70	450 x 600 x 290	17.72 x 23.62 x 11.42	4.08

KEYBOARD COMPARTMENT



Keyboard Compartment has same construction and finish as enclosure bodies. Fits pendant-mount bodies when used with the CTKBC Single Tilt; fits pedestal-mount bodies when used with the CTKBCP Dual Tilt Mechanism.

Item number	AxBxC in./mm	Opening Size D x E mm/in.	Product Weight kg
CKBC26535	11.81 x 19.68 x 2.08 300 x 500 x 52	190 x 427 7.48 x 16.81	6.53
CKBC26605	11.81 x 22.44 x 2.05 300 x 570 x 52	190 x 495 7.48 x 19.49	5.44

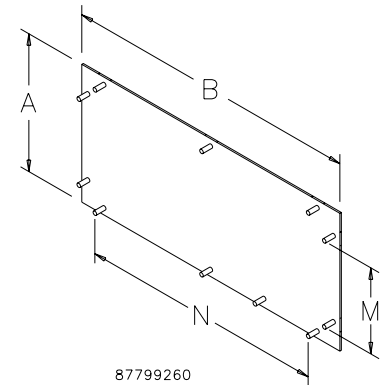


87799017

KEYBOARD FRONT PLATE



Plate is 1,6 mm thick steel finished with RAL 7035 textured, light-gray polyester powder paint or Type 304 stainless steel with a brushed finish. Available blank or with TIP NEMA 4 Keyboard. Includes mounting hardware.



STANDARD PRODUCT KEYBOARD FRONT PLATE

Item number	Description	Size A x B mm	Size A x B in.	Usable Area M x N mm	Usable Area M x N in.	Fits Keyboard Compartment	Product Weight kg
C4KBFP2653	Blank Steel	203 x 439	7.99 x 17.28	169 x 405	6.65 x 15.94	264 x 530	1.68
C4KBKP2653	With Keyboard Steel	203 x 439	7.99 x 17.28	169 x 405	6.65 x 15.94	264 x 530	2.59
C4KBFP2660	Blank Steel	203 x 509	7.99 x 20.04	169 x 475	6.65 x 18.70	264 x 600	1.86
C4KBKP2660	With Keyboard Steel	203 x 509	7.99 x 20.04	169 x 475	6.65 x 18.70	264 x 600	2.77

TILT MECHANISM

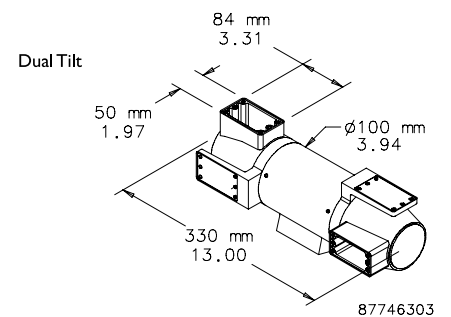
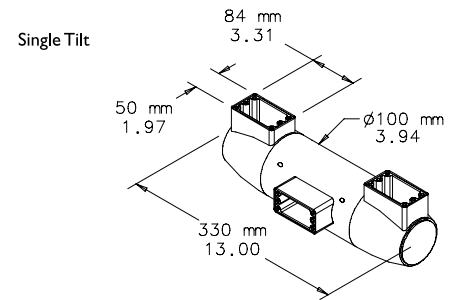


Allows operator to adjust enclosure and keyboard for maximum convenience and comfort. Cast aluminum construction. RAL 7035 light-gray polyester powder paint finish. Single tilt connects enclosure with keyboard in pendant-mount applications or enclosure with pedestal in floor-mount applications.

- Allows 20 degrees maximum enclosure tilt back when pedestal mounted
- Allows keyboard to adjust from horizontal to 45 degrees down when pendant mounted

Dual tilt connects pedestal, enclosure and keyboard.

- Allows 20 degrees maximum enclosure tilt back
- Allows keyboard to adjust infinitely between enclosure and pedestal



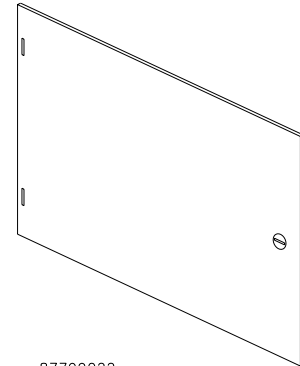
Item number	Type	Use With	Product Weight kg
CTKBC	Single	Pendant mount with keyboard, Pedestal mount without keyboard	2.63
CTKBCP	Dual	Pedestal mount with keyboard	2.99

HINGED REAR COVER



Mount rear covers with hinge on left or right side of enclosure. One or two quarter-turn latches, depending on size. Made of 3 mm-thick aluminum with a clear anodized brushed finish. Mounting hardware and grounding kit included.

Item number	Number of Latches	Fits Enclosure mm/in.	Product Weight kg
CCH2840	One	280 x 400	1.0
CCH3340	One	330 x 400	1.18
CCH4253	Two	425 x 530	1.95
CCH4560	Two	450 x 600	2.27



LIFT-OFF HINGE KIT



Use when quick removal of the rear section of a hinged enclosure is desired. Contains one set of hinges to convert the hinges on the enclosure to a lift-off configuration.

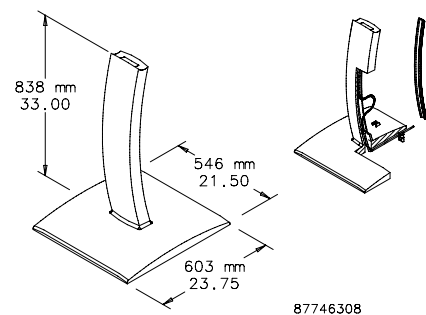
Item number	Description	Product Weight kg
CHLOCC4	Lift-off Hinge Kit	.09

PEDESTAL



Pedestal can be bolted to the floor or mounted on accessory swivel casters. Center channel is 50,8 x 76,2 mm. With rear access strip for routing wires. Requires single or dual tilt for enclosure mounting. Finished with RAL 7035 light-gray polyester powder paint.

Item number	Description
CPCC4	Two-piece cast aluminum



BOLT-DOWN KIT



Use Bolt-Down Kit to securely mount pedestal to the floor. Kit includes four brackets and mounting hardware.

Item number	Description
CPBDK	Bolt Down Kit

SWIVEL CASTERS FOR PEDESTAL BASE



Casters mount to the bottom of a pedestal base. Kit includes four casters and mounting hardware.

Item number	Description	Installed Height mm	Installed Height in.	Wheel Dia. mm	Wheel Dia. in.	Load Rating Per Set kg	Load Rating Per Set lb.
CPCC4SC	Four swivel casters	100	3.9	75	3.0	180	400

LEVELERS FOR PEDESTAL BASE



Mount levelers to the bottom of a pedestal base where leveling is required. Kit contains four levelers and mounting hardware. Cannot be used with casters or in bolt-down installations.

Item number	Description
CPCC4L	Four levelers for pedestal base

COMPACT PENDANT ARM SERIES 2, TYPE 12 (IP55)**INDUSTRY STANDARDS**

NEMA/EEMAC Type 12

IEC 60529, IP55

DIN 40050

**APPLICATION**

COMPACT Series 2 Pendant Arms allow operators to easily move controls into and out of position as needed, and they are easily mounted to a machine, wall or floor. Offering both superior load-bearing capacity and functional reliability, the COMPACT Series 2 Pendant Arm has a maximum load of 45,8 kg at 1 m and is recommended for use with INLINE, CC2000, CC4000 and CONCEPT HMI enclosures as well as Consoles.

SCOPE OF DELIVERY

- Compact pendant arm components
- Assembly kit
- Installation instruction

FEATURES

- Series components provide excellent structural strength.
- Removable access plates simplify cable installation inside fittings
- Adjustable set screws allow accurate alignment of supporting tubes

SPECIFICATIONS

- Cast aluminum couplings and extruded aluminum tubing.
- Multiple coupling types and three standard tube lengths (500, 1000 and 1500 mm) combine to form numerous configurations as conduits for equipment wiring (see configuration guide)
- Heavy duty bearings in all movable joints for convenient, smooth operation and enhanced durability
- Deep tube fittings in all couplings
- Oil-resistant neoprene gasket

FINISH

Couplings and access plates have RAL 7035 light-gray polyester powder paint finish. Tubing is anodized aluminum.

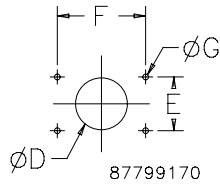
*For product specific accessories, please go to the end of each subsection.
For other general accessories, please refer to the chapter "Accessories".*

STANDARD CUTOUT FOR MOUNTING

Dimensions for Cutout	Set-Up Joint in./mm	Vertical or Horizontal Wall Joint in./mm	Flange or Flange Elbow Coupling/Swivel Tilt Straight or 90° Elbow in./mm	Wall Flange or Base Bracket in./mm	Rotational Base in./mm
ØD	1.58 40	2.76 70	1.58 40	— —	1.58 40
E	3.54 90	3.54 90	2.36 60	3.54 90	3.54 90
F	3.54 90	4.33 110	2.36 60	3.54 90	3.54 90
ØG	0.35 9	0.35 9	0.26 7	0.35 9	0.35 9

See product drawings for alternate shallow enclosure mounting.

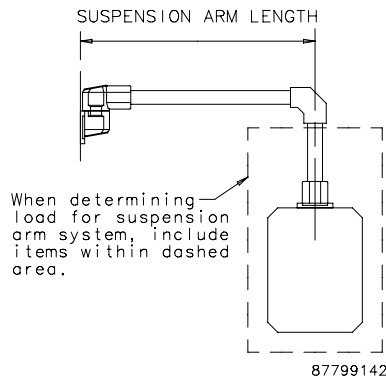
Standard Cutout for Mounting



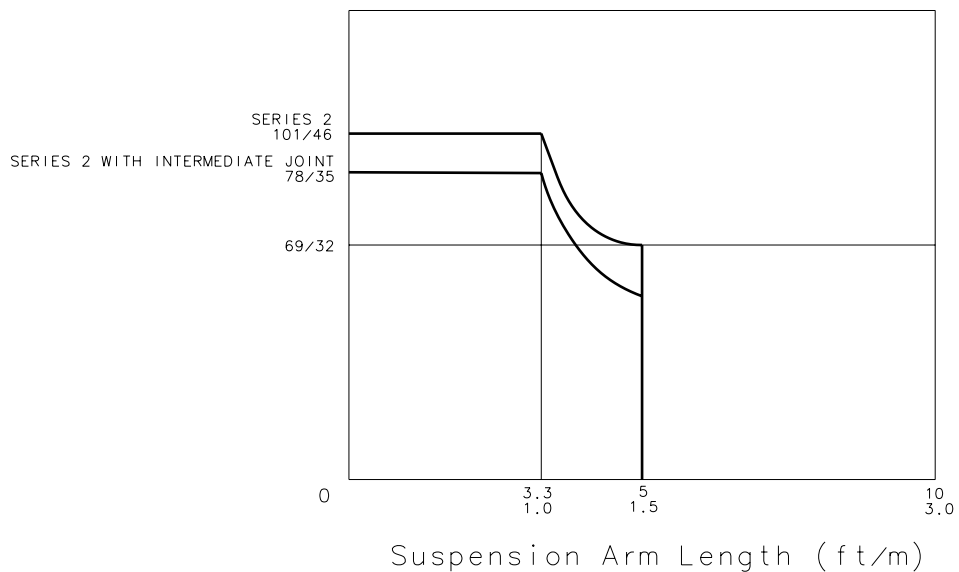
SYSTEM LOAD CAPACITY

The Series 2 pendant arm load graph is the result of load capacity tests.

Load Diagram



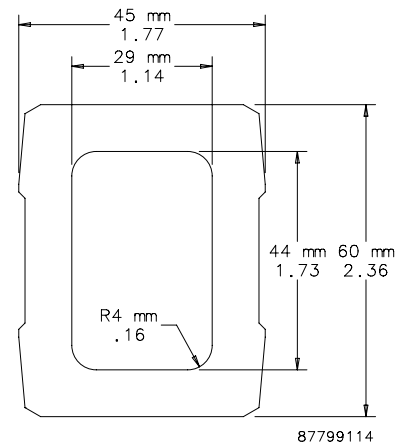
Maximum Recommended Load (lb/kg)



TUBES



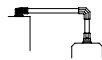
Hollow aluminum extrusion available in 500, 1000 and 1500 mm lengths. Connection components fastened to support arm with set screws. DIN 59411 and 2395.



87799114

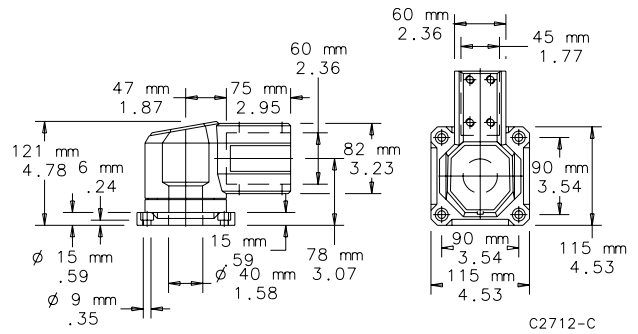
Item number	AxBxC in./mm	Length in./mm	External Dimensions in./mm	Wall Thickness Dimensions in./mm	Inside Cross Section cm ²	Inside Cross Section in. ²	Weight kg
CCS2T5	19.68 x 1.77 x 2.36 500 x 45 x 60	19.68 500	1.77 x 2.36 45 x 60	0.31 8	12.65	1.96	2.04
CCS2T10	39.37 x 1.77 x 2.36 1000 x 45 x 60	39.37 1000	1.77 x 2.36 45 x 60	0.31 8	12.65	1.96	4.08
CCS2T20	59.06 x 1.77 x 2.36 1500 x 45 x 60	59.06 1500	1.77 x 2.36 45 x 60	0.31 8	12.65	1.96	6.35

SET-UP JOINT



Joint includes access plate for easy wire installation. Turning range of 300 degrees. Cast aluminum with RAL 7035 light-gray polyester powder paint finish. Setscrews, gasket and removable access plate included. Mounting fasteners are not provided.

Item number	Weight kg
CCS2SJLG	1.81



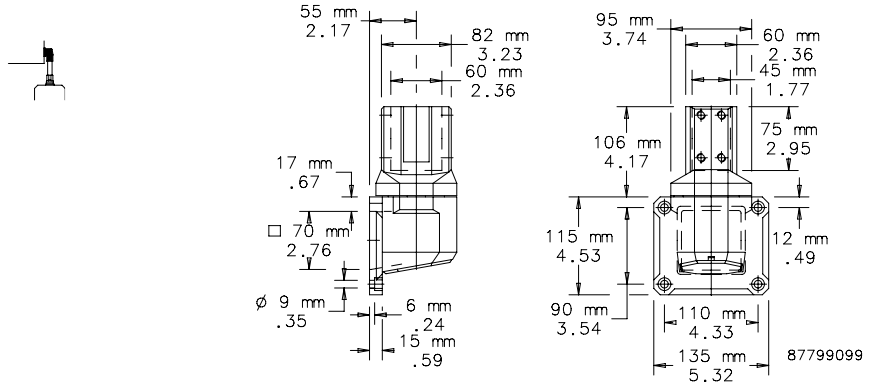
C2712-C

WALL JOINT (VERTICAL)



Vertical joint includes access plate for easy wire installation. Turning range of 300 degrees. Cast aluminum with RAL 7035 light-gray polyester powder paint finish. Setscrews, gasket and removable access plate included. Mounting fasteners are not provided.

Item number	Weight kg
CCS2WJVLG	2.27

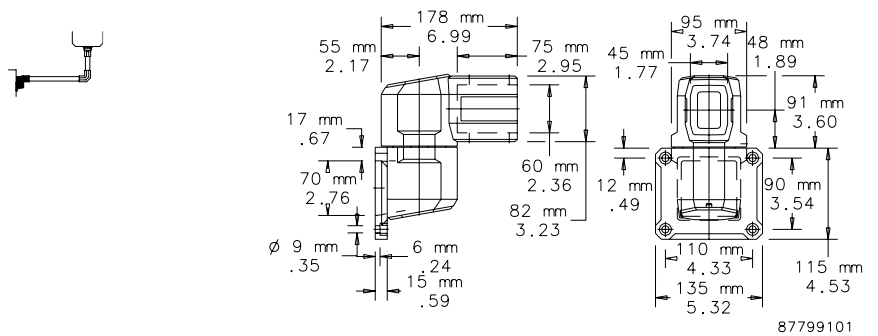


WALL JOINT (HORIZONTAL)



Includes access plates for easy wire installation. Turning range of 300 degrees. Cast aluminum with RAL 7035 light-gray polyester powder paint finish. Setscrews, gasket and removable access plates included. Mounting fasteners not provided.

Item number	Weight kg
CCS2WJHLG	2.27

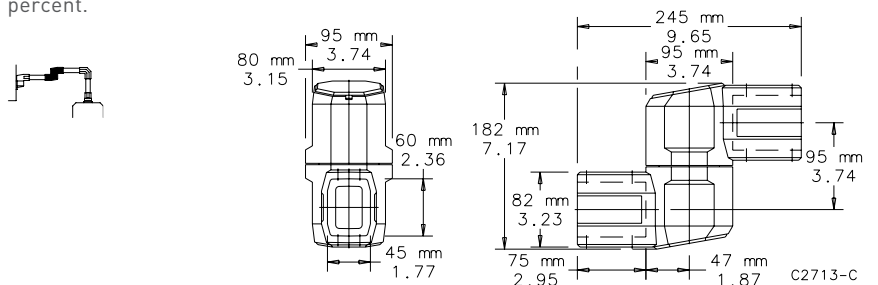


INTERMEDIATE JOINT



Joint is cast aluminum with RAL 7035 light-gray polyester powder paint finish. Turning range is 360 degrees with stop. Includes access plates for easy wire installation, installation hardware and gasket. Use of the intermediate joint reduces pendant arm load capacity by 43 percent.

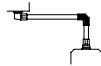
Item number	Weight kg
CCS2IJLG	2.27



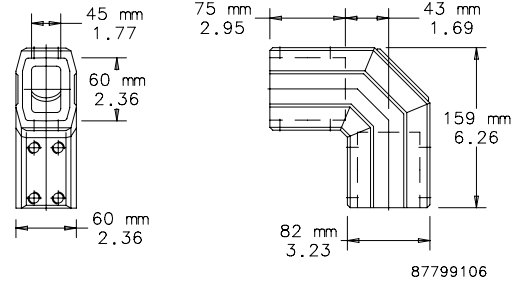
HEAVY DUTY ELBOW



Elbow is made of aluminum with increased wall thickness for additional strength and support. Setscrews for tube adjustment. Cast aluminum with RAL 7035 light-gray polyester powder paint finish. All installation hardware and gasket included.



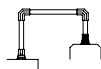
Item number	Weight kg
CCS2EHDLG	1.36



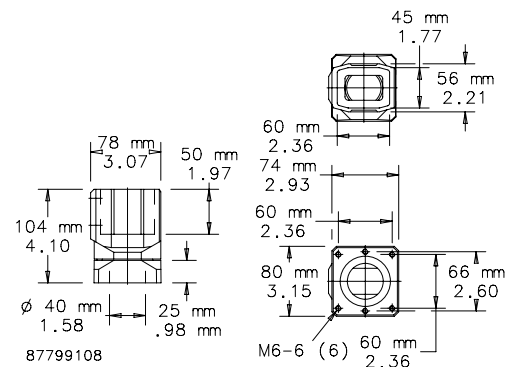
FLANGE COUPLING



Coupling can rotate 300 degrees. Maintenance-free bearing is steel and polyamide. Cast aluminum with RAL 7035 light-gray polyester powder paint finish. Installation hardware, mounting fasteners and gasket included.



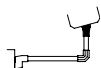
Item number	Weight kg
CCS2FC1G	1.13



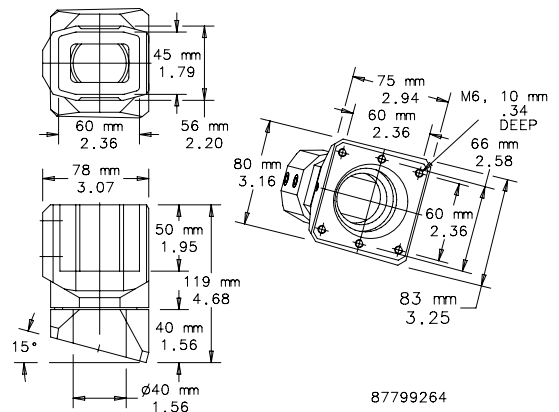
FLANGE COUPLING, 15-DEGREE



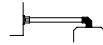
Coupling can rotate 300 degrees. Maintenance-free bearing is steel and polyamide. Enclosure is mounted at a 15-degree incline angle. Cast aluminum with RAL 7035 light-gray polyester powder paint finish. Installation hardware, mounting fasteners and gaskets included.



Item number	Weight kg
CCS2FC15LG	1.13

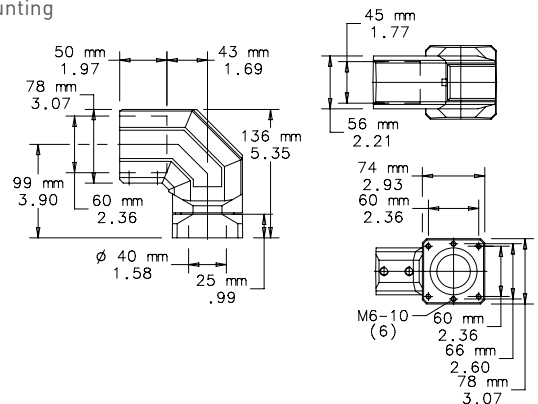


FLANGE ELBOW COUPLING



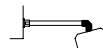
Turning range of 300 degrees. Maintenance-free bearing is steel and polyamide. Includes access plate for easy wire installation. Cast aluminum finished in RAL 7035 light-gray polyester powder paint. Installation hardware, mounting fasteners and gasket included.

Item number	Weight kg
CCS2FECLG	1.36



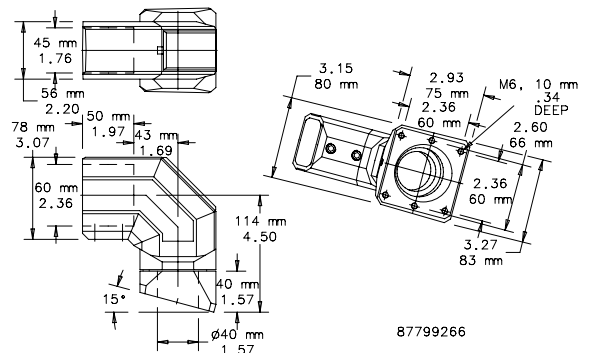
87799110

FLANGE ELBOW COUPLING, 15-DEGREE



Turning range of 300 degrees. Maintenance-free bearing is steel and polyamide. Access plate included for easy wire installation. Enclosure is mounted at a 15-degree incline angle. Cast aluminum finished in RAL 7035 light-gray polyester powder paint. Installation hardware, mounting fasteners and gaskets included.

Item number	Weight kg
CCS2FEC15LG	1.41



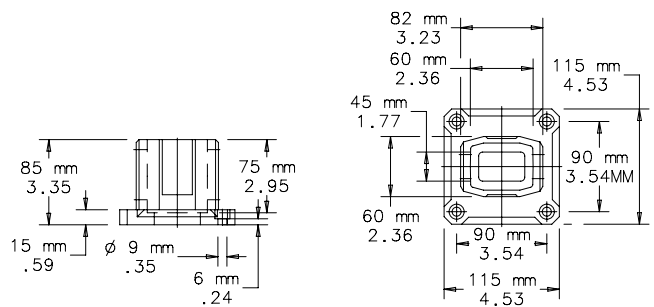
87799266

BASE BRACKET/WALL FLANGE



Cast aluminum with RAL 7035 light-gray polyester powder paint finish. Set screws and gasket are included. Mounting fasteners are not provided.

Item number	Weight kg
CCS2WFBLG	1.13

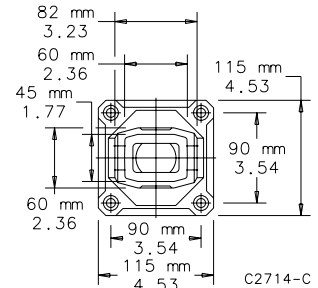
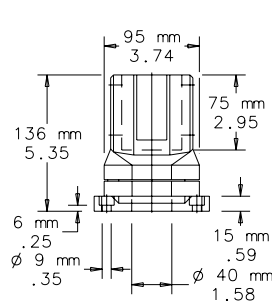
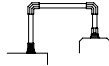


87799112

ROTATIONAL BASE



Turning range of 300 degrees. Cast aluminum finished in RAL 7035 light-gray polyester powder paint. Setscrews and gasket are included. Mounting fasteners are not provided.



Item number	Weight kg
CCS2RBLG	1.59

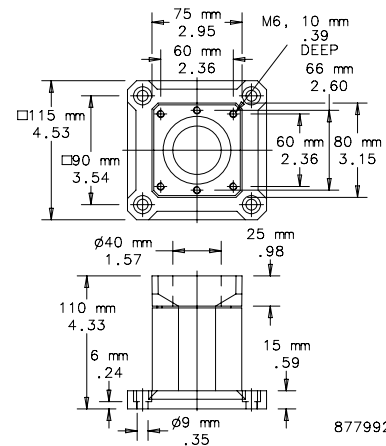
ROTATIONAL BASE BRACKET



Turning range of 300 degrees. Cast aluminum finished in RAL 7035 light-gray polyester powder paint. Setscrews and gaskets are included. Mounting fasteners are not provided.



Item number	Weight kg
CCS2RBBLG	1.22



87799268

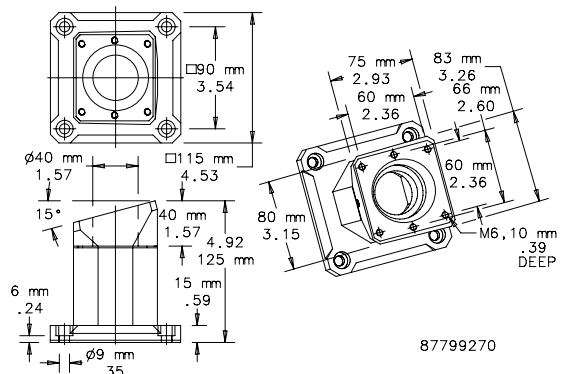
ROTATIONAL BASE BRACKET, 15-DEGREE



Turning range of 300 degrees. Enclosure is mounted at a 15-degree incline angle. Cast aluminum finished in RAL 7035 light-gray polyester powder paint. Setscrews and gaskets are included. Mounting fasteners are not provided.



Item number	Weight kg
CCS2RBB15LG	1.22



87799270

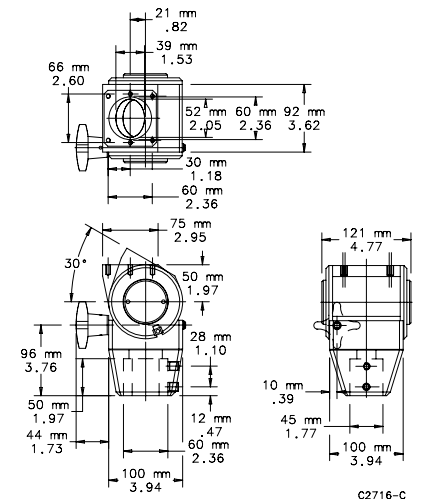
SWIVEL TILT STRAIGHT



Mounts between pendant arm and HMI enclosure to provide both swivel and tilt options for the machine operator. Swivel allows 300-degree maximum rotation. Tilt allows infinite adjustment from horizontal to 30 degrees. Cast aluminum finished in RAL 7035 light-gray polyester powder paint. Installation hardware, mounting fasteners and gasket included.
 Maximum load is 30 kg.



Item number	Weight kg
CCS2STLG	3.18



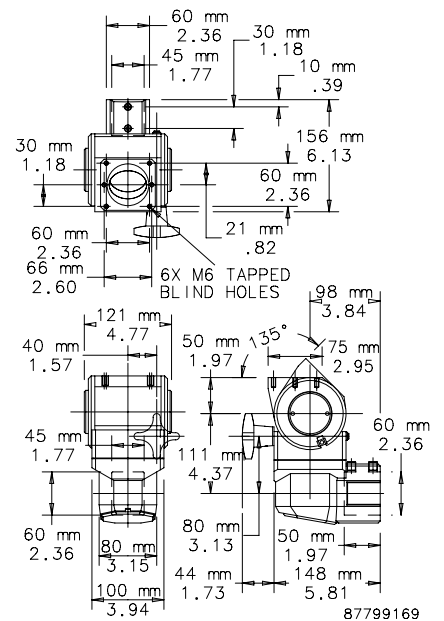
SWIVEL TILT 90-DEGREE ELBOW



Mounts between pendant arm and HMI enclosure to provide both swivel and tilt options for the machine operator. A 90-degree elbow is incorporated into this design. Swivel allows 300-degree maximum rotation. Tilt allows infinite adjustment from horizontal to 30 degrees. Cast aluminum finished in RAL 7035 light-gray polyester powder paint. Installation hardware, mounting fasteners and gasket are included.
 Maximum load is 30 kg.



Item number	Weight kg
CCS2ESTLG	3.40



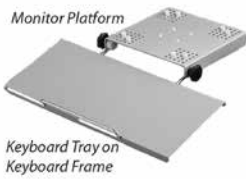
PEDESTAL BASE



Base is cast aluminum one-piece construction finished with RAL 7035 light-gray textured polyester powder paint. Includes all hardware for attaching tubes.

Item number
CCS2PB

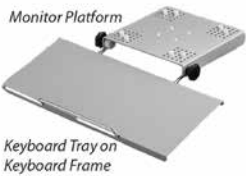
MONITOR PLATFORM



Platform attaches to pendant arm to provide a surface for a monitor. Adjustable stops hold monitor securely in place. Aluminum construction finished with RAL 7042 gray polyester powder paint. Order Monitor Platform, Keyboard Tray and Keyboard Frame separately.

Item number	Description
CCS1MP	1.22 Monitor Platform (Does not include Keyboard Frame or Keyboard Tray)

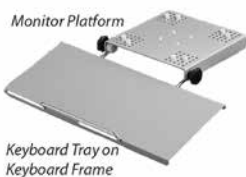
KEYBOARD FRAME



Mounts to monitor platform. Frame locks at desired position by tightening knobs. Chrome plated finish. Order Monitor Platform, Keyboard Tray and Keyboard Frame separately.

Item number	Description
CCS1KBF	Keyboard Frame only

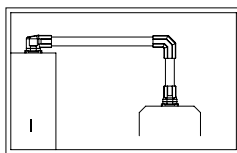
KEYBOARD TRAY



Tray attaches to keyboard frame. Provides a surface for a PC mouse as well as a platform for a keyboard. Aluminum construction finished with RAL 7042 gray polyester powder paint. Order Monitor Platform, Keyboard Tray and Keyboard Frame separately.

Item number	Description
CCS1KBT	Keyboard Tray only

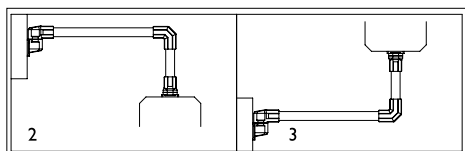
COMPACT PENDANT ARM SERIES 2 CONFIGURATIONS



87799173

1

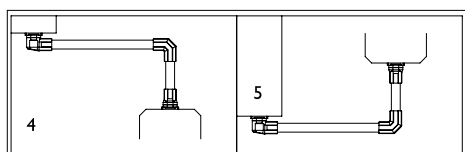
Description	Qty.	Item number
Set up joint	1	CCS2SLG
Heavy duty elbow	1	CCS2EH DLG
Flange coupling or Swivel tilt	1	CCS2F CLG CCS2STLG



87799174

2 and 3

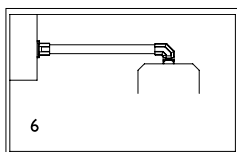
Description	Qty.	Item number
Wall joint (horizontal)	1	CCS2WJHLG
Heavy duty elbow	1	CCS2EH DLG
Flange coupling or Swivel tilt or Flange coupling 15°	1	CCS2F CLG CCS2STLG CCS2F C15LG



87799175

4 and 5

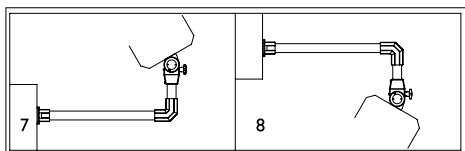
Description	Qty.	Item number
Set up joint	1	CCS2SJLG
Heavy duty elbow	1	CCS2EH DLG
Flange coupling or Swivel tilt	1	CCS2F CLG CCS2STLG



87799176

6

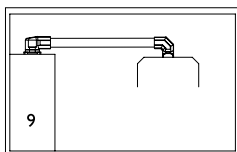
Description	Qty.	Item number
Wall flange/base bracket	1	CCS2WFBLG
Flange elbow coupling or 90° Swivel tilt or Flange elbow coupling 15°	1	CCS2FE CLG CCS2ESTLG CCS2FE C15LG



87799177

7 and 8

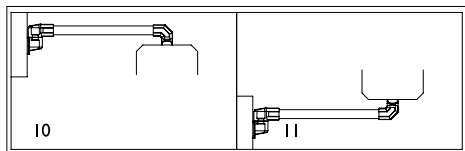
Description	Qty.	Item number
Wall flange/base bracket	1	CCS2WFBLG
Heavy duty elbow	1	CCS2EH DLG
Flange coupling or Swivel tilt	1	CCS2F CLG CCS2STLG



87799178

9

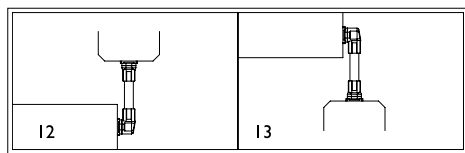
Description	Qty.	Item number
Set-up joint	1	CCS2SJLG
Flange elbow coupling or 90° Swivel tilt	1	CCS2FE CLG CCS2ESTLG



87799179

10 and 11

Description	Qty.	Item number
Wall joint (horizontal)	1	CCS2WJHLG
Flange elbow coupling or 90° Swivel tilt	1	CCS2FE CLG CCS2ESTLG

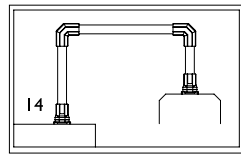


87799180

12 and 13

Description	Qty.	Item number
Wall joint (vertical)	1	CCS2WJVLG
Flange coupling or Swivel tilt	1	CCS2F CLG CCS2STLG

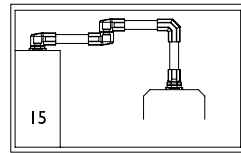
COMPACT PENDANT ARM SERIES 2 CONFIGURATIONS



87799181

14

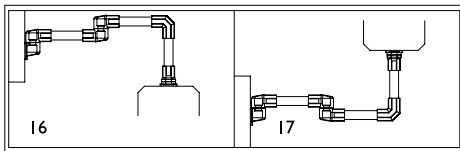
Description	Qty.	Item number
Rotational base	1	CCS2RBLG
Heavy duty elbow	2	CCS2EH DLG
Flange coupling or Swivel tilt	1	CCS2F CLG
	1	CCS2STLG



87799182

15

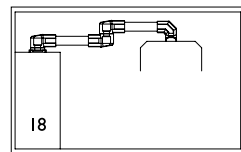
Description	Qty.	Item number
Set up joint	1	CCS2SJLG
Intermediate joint	1	CCS2IJLG
Heavy duty elbow	1	CCS2EH DLG
Flange coupling or Swivel tilt	1	CCS2F CLG
	1	CCS2STLG



87799183

16 and 17

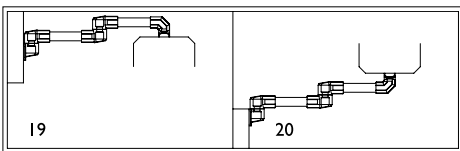
Description	Qty.	Item number
Wall Joint (horizontal)	1	CCS2WJHLG
Intermediate joint	1	CCS2IJLG
Heavy duty elbow	1	CCS2EH DLG
Flange coupling or Swivel tilt	1	CCS2F CLG
	1	CCS2STLG



87799184

18

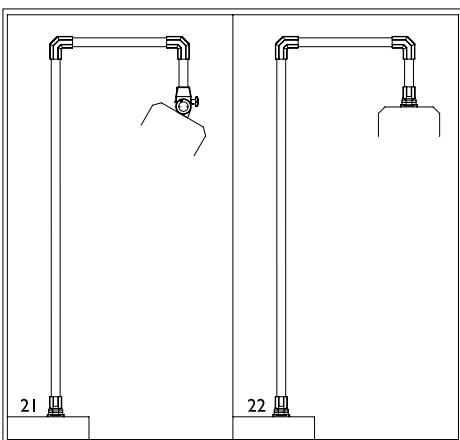
Description	Qty.	Item number
Set up joint	1	CCS2SJLG
Intermediate joint	1	CCS2IJLG
Flange elbow coupling or 90° Swivel tilt	1	CCS2FE CLG
	1	CCS2ESTLG



87799185

19 and 20

Description	Qty.	Item number
Wall joint (horizontal)	1	CCS2WJHLG
Intermediate joint	1	CCS2IJLG
Flange elbow coupling or 90° Swivel tilt	1	CCS2FE CLG
	1	CCS2ESTLG



C2802-C

21 and 22

Description	Qty.	Item number
Wall flange/base bracket	1	CCS2WFBLG
Heavy duty elbow	1	CCS2EH DLG
Flange coupling or Swivel tilt	1	CCS2F CLG
	1	CCS2STLG

Note to the Specifier:

1. Select pendant system sizing using the COMPACT Series 2 load capacity chart.
2. Tube Item numbers are not included in configuration tables.

NOTES :



WWW.PENTAIRPROTECT.COM

NORTH AMERICA

Minneapolis, MN
Tel: +1.763.421.2240

Solon, OH
Tel: 1.800.497.4304

Mexico, D.F.
Tel: +52.55.5280.1449

Toronto, Canada
Tel: +1.416.289.2770

SOUTH AMERICA

Sao Paulo, Brazil
Tel: +55.11.5184.2100

Boitura, Brazil
Tel: +55.15.3363.9148

EUROPE

Andrézieux, France
Tel: +33.4.77.36.54.32

Betschdorf, France
Tel: +33.3.88.90.64.90

Straubenhardt, Germany
Tel: +49.7082.794.0

Dzierzoniow, Poland
Tel: +48.74.64.63.900

Lainate, Italy
Tel: +39.02.932.7141

Aachen, Germany
Tel: +49.2405.40996.0

MIDDLE EAST & INDIA

Dubai, United Arab Emirates
Tel: +971.4.378.1700

Bangalore, India
Tel: +91.80.6715.2001

ASIA

Shanghai, P.R. China
Tel: +86.21.2412.6943

Singapore
Tel: +65.6768.5800

Shin-Yokohama, Japan
Tel: +81.45.476.0271

Seoul, Korea
Tel: +82.2.2129.7755

Qingdao
Tel: +86.532.8771.6101

Pentair and Hoffman are owned by Pentair or its global affiliates. All other trademarks are the property of their respective owners.

©2016 Pentair.